



SOCIAL INFRASTRUCTURE

Building on a solid foundation of experience in traditional government infrastructure projects, Altus Group has emerged as the industry leader in providing independent and unbiased analysis for public-private initiatives, particularly those funded through alternative financing and procurement methods.



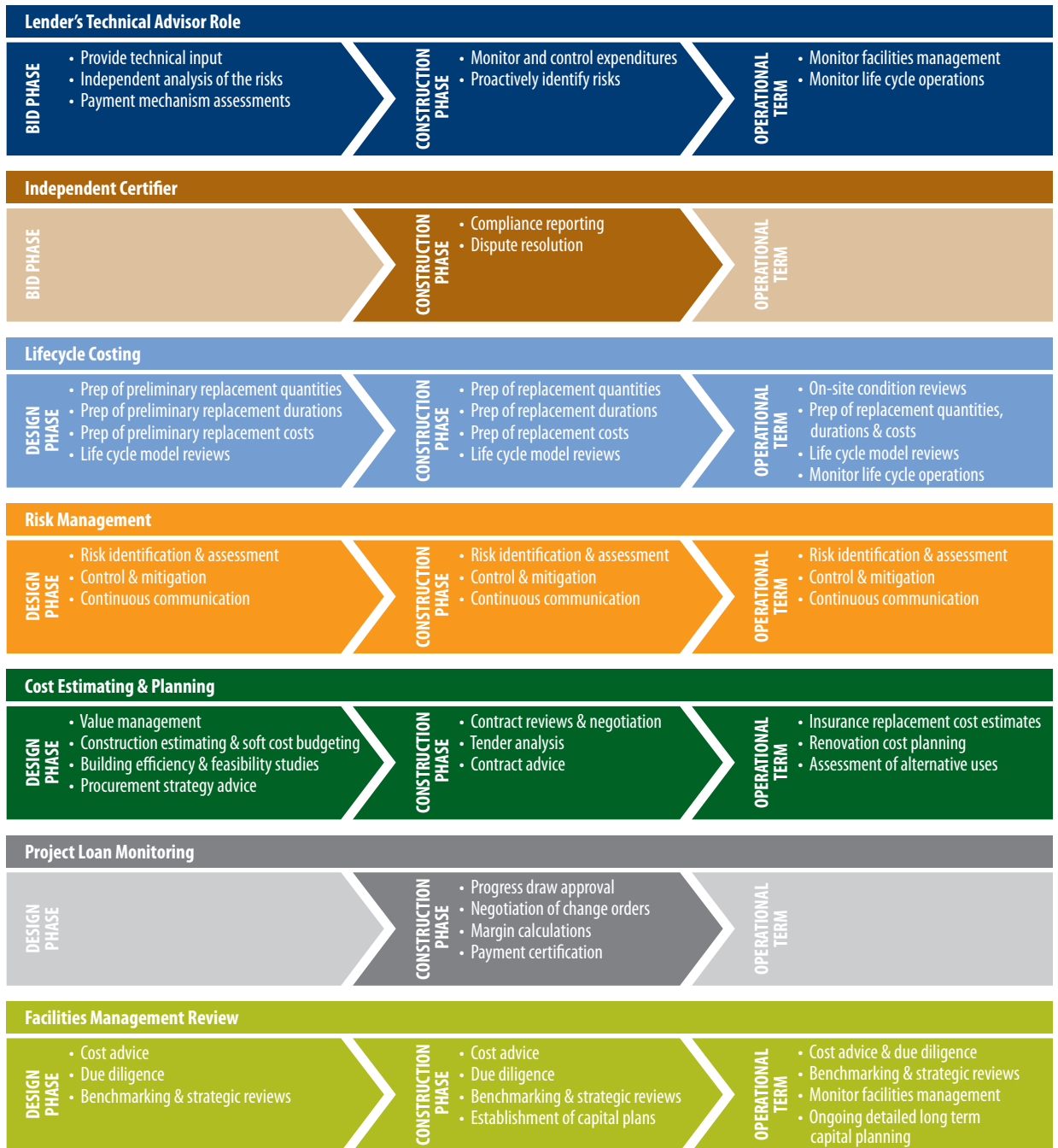
FOCUS ON

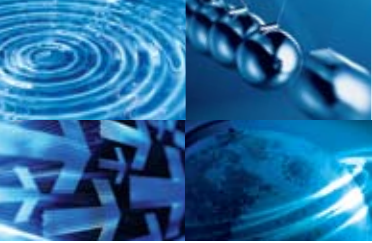
Social Infrastructure

Altus Group's Social Infrastructure team provides unrivalled independent advice and solutions. We have developed a proven track record with an expanding client base demonstrating confidence in our ability to provide reliable and impartial expert advice. We provide services to a broad range of public and private sector clients as they relate to social infrastructure in the following areas:

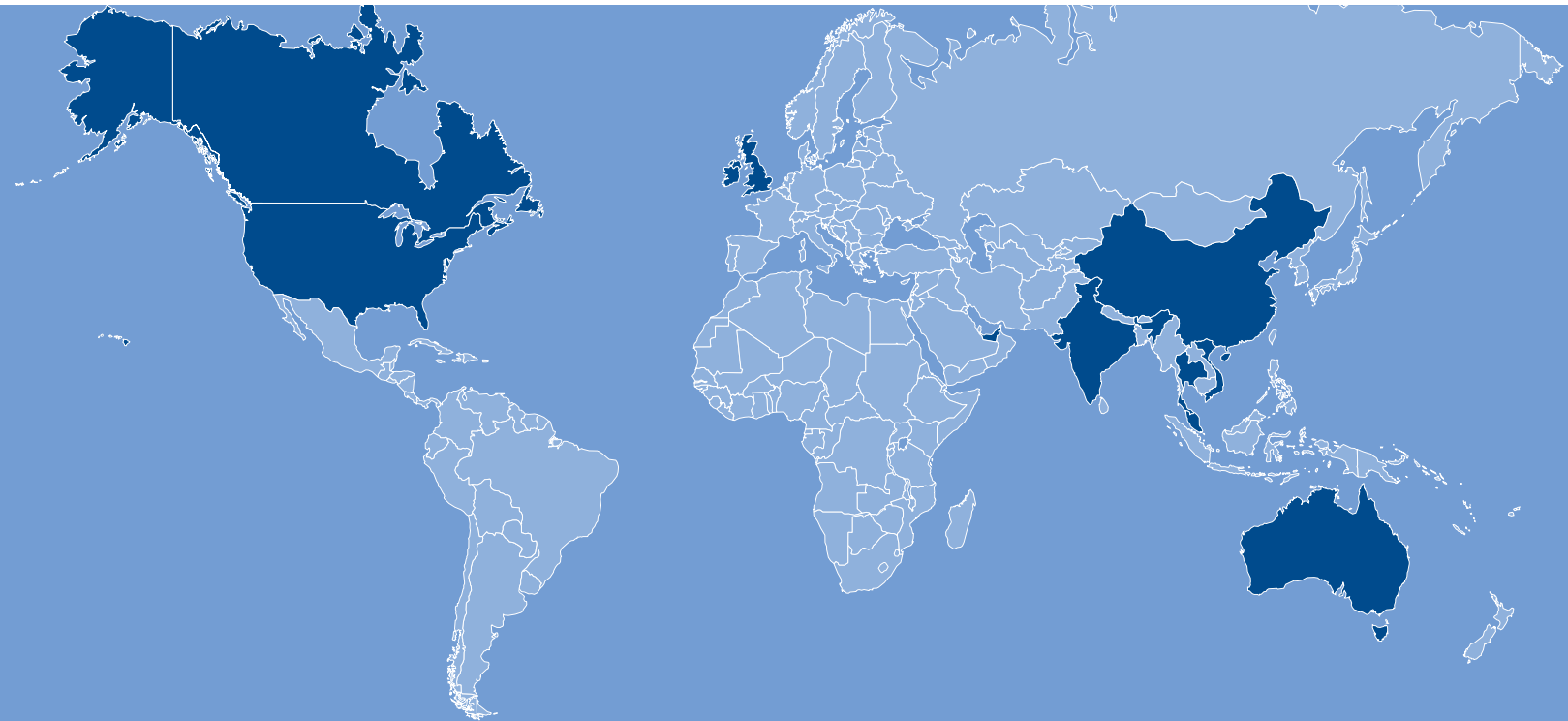
- **Lender's Technical Advisor:** The technical advisor's objective is to identify planning, design, construction, facilities management, life cycle, and payment mechanism risks for the lenders, determine that mitigation strategies are appropriate and/or recommend alternate solutions. We provide technical input and an independent analysis of the risks by reviewing agreements, contracts, background reports, schedules and pricing at the bid and construction stages, through interactive collaboration with the project team and their lenders.
- **Independent Certifier:** Jointly commissioned by the sponsor and proponent, the Independent Certifier provides critical expertise during the construction phase of a project to ensure compliance with the output specifications, and provide dispute resolution services. The skill sets within Altus Group make us the logical choice to carry out the role of Independent Certifier as required in P3/PFI agreements. We are able to provide informed, unbiased, independent third-party technical advice to the project proponent and project sponsors.
- **Life cycle Costing:** Altus Group is focused on developing solutions to assist organizations to manage their capital spending in real estate and infrastructure assets. Our services include on-site assessments and condition reviews, preparation of budgets for annual and periodic repairs, and life cycle model reviews. Proactive preconstruction advice with appropriately planned maintenance and repairs can significantly improve the replacement duration of elements, and therefore impact life cycle costs.
- **Risk Management:** Altus Group's comprehensive risk assessment and management services forecast the financial implications of project risks and recommend responses throughout the life of the project. Our proactive approach to risk management includes risk identification and assessment, control and mitigation, and continuous communication with all stakeholders.
- **Cost Estimating and Planning:** Preconstruction cost planning and budget control objectives include maintaining the client's budget, achieving value for money and exploring life cycle costing and design expectations. We provide a broad range of services at the preconstruction stage to achieve these objectives. Our cost planning services include construction estimating, soft cost budgeting, value management, building efficiency studies, procurement strategy advice, contract reviews, feasibility studies, tender analysis and contract negotiation. Proactive cost estimating and planning will assist the client and design team in appropriate decision making.
- **Project Loan Monitoring:** Our project loan monitoring services provide our clients with an objective critique of the construction and development budgets, thus assessing the financial feasibility and enabling the client to make informed decisions. We continue to review and verify project-related documentation and contracts on an ongoing basis to allow accurate cost-to-date and cost-to-complete reporting. These services include progress draw approval, cash flow projections, negotiation of change orders, lease reviews, advance margin calculations, payment certification and reviews of all material financial project documentation.
- **Facilities Management Review:** Altus Group provides strategic facilities management review services including defining, planning and analyzing long term activities and business targets for assets. Our services are designed to enable owners and managers of real estate to strategically focus and plan, and this includes facility surveys, condition reports, asset plans, and replacement strategies. Altus Group has the skills and technology to assist you with your facilities management requirements related to renewal of assets, increasing asset standards, upgrading to comply with legislation or expanding your portfolio.

Altus Group's Social Infrastructure team provides unrivalled independent advice and solutions.





Our Network



Altus offers diversified services and unparalleled expertise to a broad range of clients, in various industries across Canada and internationally.

About Altus Group

Altus Group is the leading multidisciplinary provider of independent real estate consulting and professional advisory services worldwide. With a staff of over 1,500, Altus Group has a network of over 50 offices in 11 countries worldwide, including Canada, UK, Australia, Asia, USA and the Middle East. We operate four interrelated Business Units, bringing years of expertise together into one comprehensive platform: Research, Valuation and Advisory; Cost Consulting and Project Management; Realty Tax Consulting and Geomatics services. Our business units work independently or in cooperation to provide clients with the benefit of combined expertise. Our distinctive approach allows for decisions based on independent, carefully reviewed conclusions.

Altus Group provides services to some of the most prominent businesses, including banking institutions, pension funds, insurance companies, accounting firms, law firms, public real estate organizations (including REITs), industrial companies, private investors, asset and fund managers, real estate developers, governmental institutions, and oil and gas companies.



altusgroup.com info@altusgroup.com